

# MODEL AC112

4½" Deep • Single Thickness Blade • Round Steel Balancing Damper

## STANDARD MATERIALS AND CONSTRUCTION

**FRAME:** 4½" x 20-GA galvanized steel hat channel for dampers ≤ 18" dia.; Dampers ≥ 19" are 20-GA with reinforcing beads or 18-GA galvanized steel.

**BLADE:** Galvanized steel, single thickness blade  
 22-GA for dampers 4" to 12" dia.  
 20-GA for dampers 13" to 18" dia.  
 18-GA for dampers 19" to 24" dia.

**BEARINGS:** Nylon

**AXLES:** ⅜" square plated steel stub, with lanced retainers

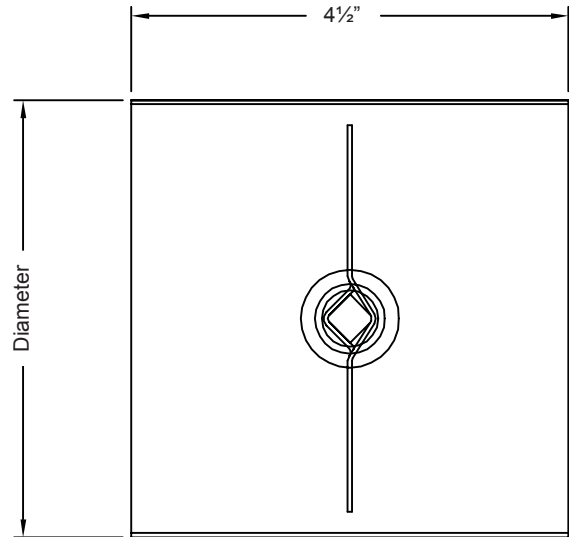
**ACTUATOR:** ⅜" square manual locking quadrant, shipped loose

## OPTIONS

2" Stand-Off Kit

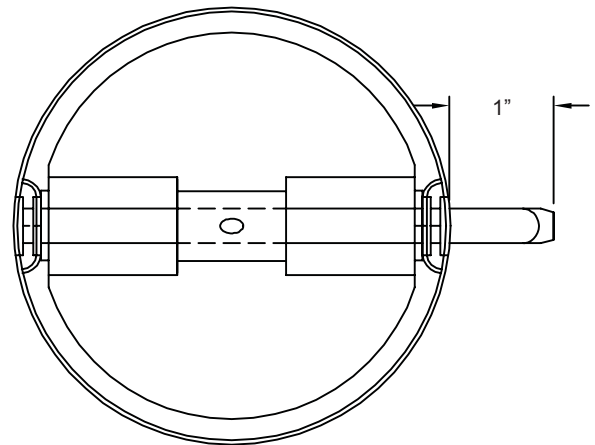
## NOTES

1. "A" diameter is opening dimension. Dampers are provided ¼" undercut.
2. Dampers can only be ordered in 1" increments.
3. This model is not recommended for motorized applications.
4. AC112 has only one blade and will extend into the airstream in most cases.
5. Maximum face velocity is 1500 fpm. Maximum differential pressure is 1 in.wg.
6. Dampers may be mounted vertically or horizontally.



## DAMPER SIZES

Panels	Min Panel	Max Single Panel
AC112	4" dia.	24" dia.



# MODEL AC112

4½" Deep • Single Thickness Blade • Round Steel Balancing Damper

This page intentionally left blank.

air balance

Dampers  Louvers  
UL Life Safety Products  
Division of Mestek  
Member of AMCA