

# MODEL ASY

Equipment Screen • Extruded Aluminum Grille Screen

## STANDARD MATERIALS AND CONSTRUCTION

**SUPPORTS:** Shall incorporate rear angle 2" x 2" x 1/4" extruded aluminum to withstand windload of 20 psf, approximately 90 mph wind; spaced on 60" centers

**BLADES:** .081" thick; 6063-T6/T52 extruded aluminum alloy

**BLADE SPACING:** 3"

**FINISH:** Mill

## OPTIONS

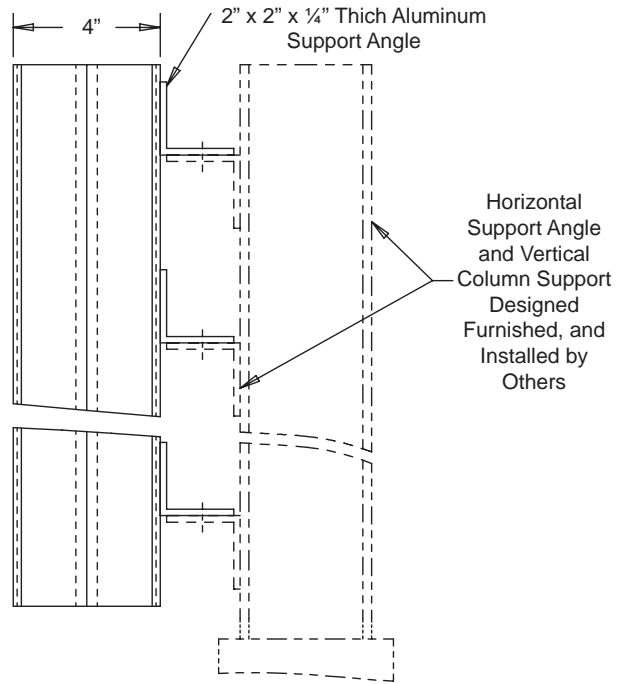
- Finish - Baked Enamel, Kynar, Anodize
- Mitered or Post Corner
- Hinged Access
- Cap Covers

## NOTES

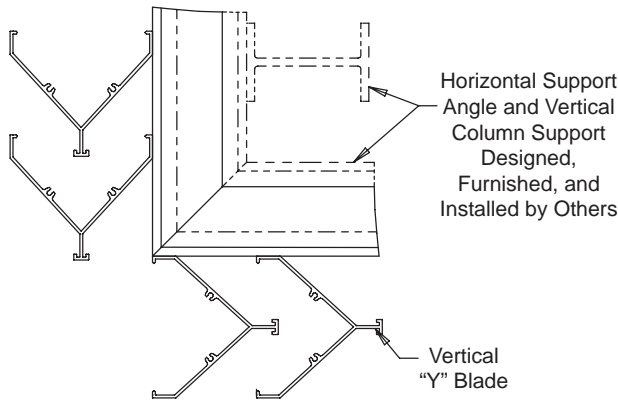
1. Shipping weight approximately 4.5 lbs./sq.ft.

## SCREEN SIZES

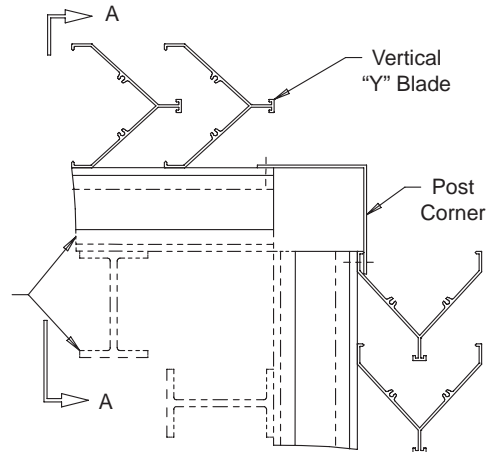
Panels	Min Panel	Max Single Panel
ASY	12"W x 12"H	60"W x 96"H 40 sq.ft.



Section View



Mitered Corner Detail



Post Corner Detail

# MODEL ASY

Equipment Screen • Extruded Aluminum Grille Screen

This page intentionally left blank.

air balance

Dampers  Louvers  
UL Life Safety Products  
Division of Mestek  
Member of AMCA